

IDF unions



Introduction

IDF union is composed of IDF-13 HEXAGONAL, IDF-14 WELD LINER, IDF-15 WELD MALE, and H TYPE SEAL. IDF nut includes round nut, hexagonal nut and blank nut. Besides, we have WELD type and IDF expanding type which can supply what you need.

The materials are offered for food, dairy, beverage, meat processing, vacuum processing, pharmaceutical, chemical, and many other industries.

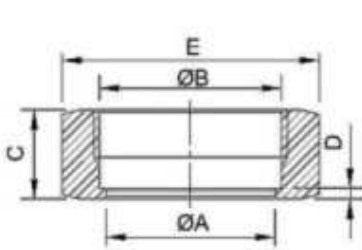
It is necessary you specify at the time when orders be placing if heat numbers and MTR's are required.

Specifications:

- * Materials: 304, 304L, 316L / 1.4401, 1.4301
- * Size : 1", 1.5", 2", 2.5", 3", 4"
- * Seal : EPDM, SILICON, VITON

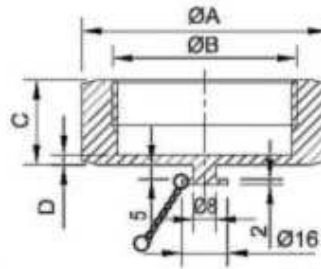
Order Information:

- * Minimum Order: Negotiable
- * FOB: Ningbo or Shanghai



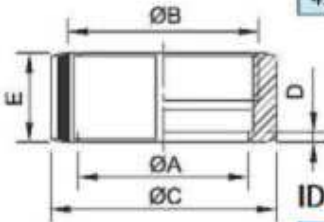
IDF Hexagonal Nut IDF-13H

SIZE	A	B	C	D	E
1.0"	30.5	34.34 x8T ACME	30	3.5	46
1.5"	43.5	47.86 x8T ACME	30	3.5	60
2.0"	57.0	61.37x8T ACME	30	3.5	75
2.5"	70.7	74.88 x8T ACME	30	3.5	90
3.0"	83.3	88.40 x8T ACME	30	3.5	105
4.0"	112.0	122.05 x6T ACME	34.9	4.7	133



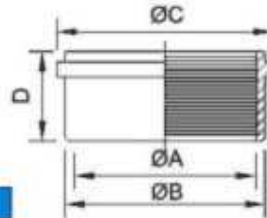
IDF-Blanks Nut IDF-13HBN

SIZE	A	B	C	D
1.0"	46	34.34 x8T ACME	30	3.5
1.5"	60	47.86 x8T ACME	30	3.5
2.0"	75	61.37x8T ACME	30	3.5
2.5"	90	74.88 x8T ACME	30	3.5
3.0"	105	88.40 x8T ACME	30	3.5
4.0"	133	122.05 x6T ACME	34.9	4.7



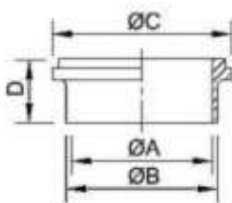
IDF Round Nut IDF-13R

SIZE	A	B	C	D	E
1.0"	30.5	34.34 x8T ACME	48	3.5	30
1.5"	43.5	47.86 x8T ACME	64	3.5	30
2.0"	57.0	61.37x8T ACME	77	3.5	30
2.5"	70.7	74.97 x8T ACME	91	3.5	30
3.0"	83.3	88.40 x8T ACME	104	3.5	30
4.0"	112.0	115.41 x8T ACME	135	4.7	34.9



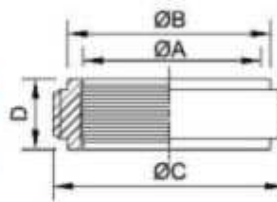
IDF Expanding Liner IDF-14R

SIZE	A	B	C	D
1.0"	25.5	29.2	33.8	20
1.5"	38.2	42.7	47.0	20
2.0"	50.9	56.2	60.5	25
2.5"	63.6	69.9	74.0	30
3.0"	76.3	82.6	87.5	30
4.0"	101.7	111.1	120.6	30



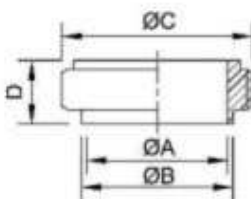
IDF Welding Liner IDF-14

SIZE	A	B	C	D
1.0"	22.1	25.4	33.8	21.5
1.5"	34.8	38.1	47.0	21.5
2.0"	47.5	50.8	60.5	21.5
2.5"	60.2	63.5	74.0	21.5
3.0"	72.9	76.2	87.5	21.5
4.0"	97.6	101.6	120.6	30.0



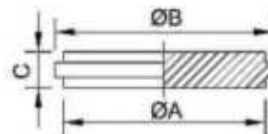
IDF Expanding Male IDF-15R

SIZE	A	B	C	D
1.0"	25.5	29.2	37.13 x8T ACME	16.5
1.5"	38.2	42.7	50.65 x8T ACME	19.5
2.0"	50.9	56.2	64.16 x8T ACME	19.5
2.5"	63.6	69.9	77.67 x8T ACME	25.0
3.0"	76.3	82.6	91.19 x8T ACME	30.0
4.0"	101.7	111.1	125.9 x6T ACME	35.0



IDF Welding Male IDF-15

SIZE	A	B	C	D
1.0"	22.1	25.4	37.13 x8T ACME	21.5
1.5"	34.8	38.1	50.65 x8T ACME	21.5
2.0"	47.5	50.8	64.16 x8T ACME	21.5
2.5"	60.2	63.5	77.67 x8T ACME	21.5
3.0"	72.9	76.2	91.19 x8T ACME	21.5
4.0"	97.6	101.6	125.9 x6T ACME	30.0



IDF Blanks IDF-16 AMP

SIZE	A	B	C
1.0"	29.2	33.8	10.5
1.5"	42.7	47.0	10.5
2.0"	56.2	60.5	10.5
2.5"	69.9	74.0	10.5
3.0"	82.6	87.5	10.5
4.0"	111.1	114.1	12.6