

## DIN Ferrule



### Introduction

The materials is offered for food, dairy, beverage, meat processing, vacuum processing, pharmaceutical, chemical, and many other industries. It is necessary you specify at the time when orders be placing if heat numbers and MTR's are required. Sanitary DIN Ferrules that Zhengyu offers are made by forged.

The DIN Ferrules could be conformed with DIN Blank End Cap which is made by solid bar, Clamp and other Adapters.

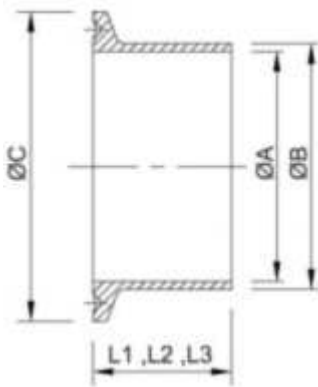
### Specifications:

- \* Material grade: 304 and 316L / 1.4301, 1.4404
- \* Size range: DN10, DN15, DN20, DN28, DN34, DN40, DN52, DN70, DN80, DN100, DN125, DN150, DN200
- \* Standard : DIN 11851, DIN11864

### Order Information:

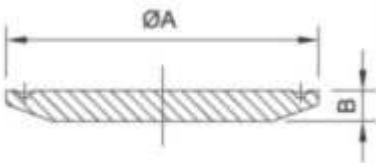
- \* Minimum Order: Negotiable
- \* FOB: Ningbo or Shanghai

## DIN FERRULE



SIZE	A	B	C	L1	L2	L3
DN10	9	12	34	12.7	21.5	28.6
DN15	15	18	34	12.7	21.5	28.6
DN20	19	22	34	12.7	21.5	28.6
DN28	25	28	50.5	12.7	21.5	28.6
DN34	31	34	50.5	12.7	21.5	28.6
DN40	37	40	50.5	12.7	21.5	28.6
DN52	49	52	64.0	12.7	21.5	28.6
DN70	66	70	91.0	12.7	21.5	28.6
DN85	81	85	106.0	15.8	21.5	28.6
DN101.6	97.6	101.6	119.0	15.8	21.5	28.6
DN104	100	104	119.0	15.8	21.5	28.6
DN125	125	129	155	15.8	21.5	28.6
DN150	150	154	183	15.8	21.5	28.6
DN200	200	204	233.5			28.6

## BLANK DIN-16AMP



SIZE	A	B
1/2"	25	6.4
3/4"	25	6.4
1.0"	50.5	6.4
1.5"	50.5	6.4
2.0"	64	6.4
2.5"	77.5	6.4
3.0"	91	6.4
4.0"	119	7.9
10	34	6.4
20	34	6.4
80	106	6.4